

## Classic silo Silo for wood pellets HPS



### High-Tech-fabric

The used fabric is more UV-resistant as normal white fabric. Seams and fabric have a minimum six times safety factor. Antistatic surface available

### Easy loading

Higher filling grade through side loading. High wear protection as standard. No air extraction is required (breathable fabric).

Inspection hatch as standard for revision and level control.

### Easy assembly

Maximum two hours with two persons.

### Dust-proof

Silos are made of High-Tech polyester fabric.

### Compatible with most extraction systems

Pneumatic suction point or discharge hopper connection to a flexible auger or few silos with „cascade service“. Mechanical extraction with connection to pneumatic discharge. A few silos also with manual or automatic reverser possible.

### Don't hesitate to contact us:

allg. **Silotec** GmbH  
Rodbachstrasse 24  
D-74397 Pfaffenhofen  
Germany  
Tel.: 0049 (0) 7046/ 96 69 -0  
Fax: 0049 (0) 7046/ 96 69 -20  
E-Mail : [info@allg-silotec.de](mailto:info@allg-silotec.de)  
Internet : [www.allg-silotec.de](http://www.allg-silotec.de)

### Standard and custom sizes

A wide range of more than 100 standard sizes available. Adaptable to most room dimensions.

Don't hesitate to contact us!

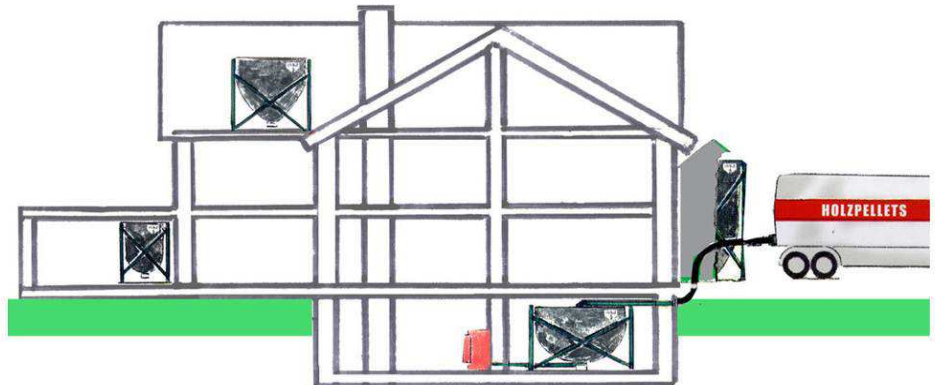


### Sustainable production

All steel parts are powder-coated for a high quality surface protection. Made in Germany, Baden-Wuerttemberg!



HPS special dimension XXL



### Delivery programm

#### Volummax®

The flat bottom silo with max. room space-usage also with rectangular sections and almost no rest (3%). Compatible with most extraction and boiler systems.

#### UV-Silo® und UV+Silo®

The classic silo between silos. Dimensions till 60 t. A complete silo tank amount can be stored in one UV-Silo®, depends on silo volume.

#### Outside installation

For installations outside we have "water-proof cover" to put over all our silos.

**Storage for wood pellets HPL**  
storages with manual extraction for pellet oven. You don't have to carry heavy and expensive bags and a year demand can be stored in a single silo. Installation of a mechanical extraction is possible. With access inside silo.

#### Hubsilo

High storage capacity, for example, in low ceiling rooms, for more ground space usage.

**Accessories for every „Pellet Project“**  
Conveying technology, flex. auger conveyors, containers, conveying tubes and supervisor equipment in different types etc.!

**Don't hesitate to contact us!**

# The advantages of wood pellet silos - HPS, classic silo

Our silos are fabricated from High-Tech fabric, which has been tried and tested for decades. (not white BIG-Bag-fabric). The seams and fabric are manufactured to a reliability standard six times higher than other products.

The grey fabric with noble look is much more UV-resistant as white fabric. Scientific studies show, the strength of the white fabric will be reduced till 50% and more after 4.800 hours of sun rays (ca. 3 years in service) with unforeseeable results. Therefore protective procedure is important by covering a window or applying a protective coat to it. This fact is often not explained, but not by us.

At the same time, the fabric has also antistatic features, almost according to ATEX-Niveau.

We focus on quality and sustainable production. Many small technical details distinguish our silos:

- The integrated wear protection made of heavy coated (gummed) fabric (surface weight ca. 860 g/m<sup>2</sup>).
- No air extraction is required during silo loading, because of breathable fabric.
- More flexibility through an inspection hatch. Therefore the service of boilers is very simple. You don't have to wait till the first delivery of your wood pellets; you can just put 10 or 15 kg of pellets into the silo and put your installation in service.
- The flexible silo cover is made of „silo body“, this gives you more safety.

The wood pellet silo is filled by a blower truck. The breathable fabric guarantees gentle and dust free loading. Components as an inspection hatch and wear protection are standard in our silos. So you benefit from more than 25 years' experience.

## Technical details of silos from standard program: (other dimensions on request – we produce according to your demands)

For room, height:	from 1,80 m till 2,15 m	from 2,15 m till 2,50 m
Structure height Ground space	1,65 m	2,00 m
1,65 m x 1,65 m	<u>HPS 165x165-27/25</u> till 3,31 m <sup>3</sup> till 2,15 t*	<u>HPS 165x 200-27/25</u> till 3,97 m <sup>3</sup> till 2,58 t*
1,65 m x 1,95 m	<u>HPS 165x195x165-27/25</u> till 3,73 m <sup>3</sup> till 2,42 t*	<u>HPS 165x 195x200-27/25</u> till 4,64 m <sup>3</sup> till 3,02 t*
1,95 m x 1,95 m	<u>HPS 195x165-27/25</u> till 4,42 m <sup>3</sup> till 2,87 t*	<u>HPS 195x 200-27/25</u> till 5,54 m <sup>3</sup> till 3,6 t*
1,95 m x 2,23 m	<u>HPS 195x223x165-27/25</u> till 4,82 m <sup>3</sup> till 3,13 t*	<u>HPS 195x 223x200-27/25</u> till 6,27 m <sup>3</sup> till 4,08 t*
2,23 m x 2,23 m	<u>HPS 223x165-27/25</u> till 5,54 m <sup>3</sup> till 3,6 t*	<u>HPS 223x 200-27/25</u> bis 7,13 m <sup>3</sup> bis 4,63 t*
2,23 m x 2,54 m	<u>HPS 223x254-27/25</u> till 6,04 m <sup>3</sup> till 3,93 t*	<u>HPS 223x 254x200-27/25</u> till 7,44 m <sup>3</sup> till 4,84 t*
2,54 m x 2,54 m	<u>HPS 254x165-27/25</u> till 6,59 m <sup>3</sup> till 4,28 t*	<u>HPS 254x 200-27/25</u> till 8,64 m <sup>3</sup> till 5,62 t*
2,68 m x 2,68 m	<u>HPS 268x165-27/25</u> till 7,14 m <sup>3</sup> till 4,64 t*	<u>HPS 268x 200-27/25</u> till 9,18 m <sup>3</sup> till 5,97 t*

\* All figures are calculative dimensions with dens. app. 0,65t/m<sup>3</sup> and can deviate in practice. The volume depends also on silo blower truck and on pellet quality.



With ground space till 2,23 x 2,23 m and with height 2,00 m there is HPS in attractive wood structure (solid carpenter's construction), consequently ecological and made in high quality!

A very quick and simple assembly, even for an inexperienced man, without special instrument – in max. 2 hours. You need for assembling only 2 types of keys and a screw driver.



Silo in kit (with prefabricated components), packed by hand, is easy to be transported in „narrow“ caves.

We propose you optionally a cost-efficient powerfull **aspiration unit**, in industrial quality.

additionally:

- Supplemental sound insulation
- containers
- conveying tubes and pipes
- conveying and dosing auger
- and many other things



Technical data of **aspiration unit**

- input power: 1490 Watt; recommended fuse: 16A
- tact time: 50 Seconds
- conveying volume: ca. 3kg/min with vacuum of max.: -0,28bar
- control unit for pneumatic cycle
- cyclone separator!
- Sound level \* (infos according circuitry expertise)
  - Without wood pellets: 59 dBA\*
  - With wood pellets: 69 dBA\*

Height movable filling tube fixation gives more flexibility. Bends (filling tubes) belong also to our program.



The silos have only one filling tube till dimensions 2,23 m, from 2,54 m they have two filling tubes.



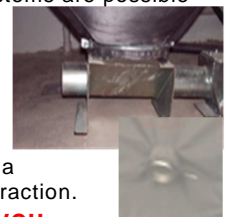
Commercially available suction points of boiler manufacturers can be used. Simple installation in pneumatic discharge hopper.



We offer you the exact solution you need for your boiler.

## There are many possible variants!

Also other discharge systems are possible with HPS: flexible auger discharge can be directly installed under the silo.



There is, no doubt, also a possibility of manual extraction.

## Who can propose you more Individuality?

